

Project: _____

Fixture Type: _____ Quantity: _____

Customer: _____

Specifications

Material:
All parts are durable 356 cast aluminum. All hardware provided shall be stainless steel or zinc plated steel.

Lens:
Choice of standard polycarbonate lens or no lens.

Fixture Mounting:
Post Mount: Post Cap with set screws.
Pendant Mount: Pin mount to tenon.
Fits 3" and 4" poles.

Drivers:
Universal voltage 120-277 is standard. 0-10V dimming is standard for LED platforms and 0-10V, TRIAC and ELV dimming to 1% protocols are standard for LED module.

See page 2 table for LED engine and driver specs, voltage and dimming protocols.



Electrical:
Approximately 12" of pull wire extends from luminaire. Additional pull wire provided for post mount arms and wall mounts.

Finish:
A polyester powder coat high quality finish is electro-statically applied and baked at 430° for exceptional durability and color retention. Products undergo an intensive five-step cleansing and pretreatment process for maximum paint adhesion.

Marine grade finish provides superior salt, humidity and UV protection. This coating withstands up to 3000 hours of continuous salt spray, comes with a 5-year warranty and is available in either a textured or gloss surface.

Modifications:
Consult factory for custom or modified designs.

LA004
LED

Weight: 23.0 lbs
EPA: 1.8

Catalog Logic

LA004 **1** **CL** **P046LD4** **D** **T5** **40K** - **PC** - **PA5651** - **72**

Luminaire Series Pendant or Post Mount Lens Light Source & Wattage Dimming Optics CCT Accessories Mounting Source Finish

Catalog Number

1 2 3 4 5 6 7 8 9

LA004 **D** — — —

1 **FIXTURE ORIENTATION**

1 Post
3 Pendant

2 **LENS**

NL (No Lens)
CL (Clear Polycarbonate)
FR (Frosted Polycarbonate)
PR (Prismatic Polycarbonate)
SE (Seeded Acrylic)
WH (White Opal Polycarbonate)

3 **LIGHT SOURCE & WATTAGES**

P029LD4 (29w Platform; 400ma Driver)
P046LD4 (46w Platform; 400ma Driver)
P078LD4 (78w Platform; 400ma Driver)
P117LD4 (117w Platform; 400ma Driver)
M016LD (16w, 2000 lumen, Cree module)
M024LD (24w, 3000 lumen, Cree module)
M037LD (37w, 4000 lumen, Cree module)

4 **DIMMING**

D (Dimming)

See page 2 table for LED engine and driver specs, voltage and dimming protocols.

5 **OPTICS**

Platform	Module
T2 (Type II)	W (T5 Wide Distributor with Dome LED Lens)
T3 (Type III)	N (T5 Narrow Distributor with Flat LED Lens)
T5 (Type V)	

6 **COLOR TEMPERATURE (CCT)**

Platform	Module
27K (2700K)	27K (2700K)
30K (3000K)	30K (3000K)
35K (3500K)	35K (3500K)
40K (4000K)	40K (4000K)

7 **ACCESSORIES**

CHC	(Clear Glass Chimney)
CHF	(Frosted Glass Chimney)
HSS90	(90° House Side Shield, polished)
HSS120	(120° House Side Shield, polished)
4ST36	(3 Ft, 1 1/4" Ridged Stem & Canopy)
PEND-CH3	(3 Ft Pendant Chain & Canopy)
*EMG-LED5	(5w, LED Emergency Driver, remote placement, Cree module only)
*EMG-LED7	(7w, LED Emergency Driver, remote placement, Cree module only)
*EMG-LED10	(10w, LED Emergency Driver, remote placement, Cree module only)
*EMG-LED20HV	(20w, High Voltage LED Emergency Driver, remote placement, for use with Platforms and Towers, 78w or less)
HLMSPC-06	(High-Low Motion Sensor/Photocell; 15' - 30' Sensor Mounting Height)
HLMSPC-10	(High-Low Motion Sensor/Photocell; 8' - 15' Sensor Mounting Height)
PC	(Button Photo Cell)
SP	(Surge Protector, 10kA & 10kV)
TLPC	(Twist Lock photo cell & receptacle)
TL	(Twist Lock receptacle only)
TL5	(5-pin Twist Lock receptacle)
TL7	(7-pin Twist Lock receptacle)

***For Emergency lumen output data, see Resources section at www.ANPlighting.com.**

8 **MOUNTING SOURCE**

Post Mount Arms *See Page 3 for Style/Size		Wall Mount Arms *See Page 3 for Style/Size	
PA3111	PA8521	WM4511	WM8581
PA3113	PA8523	WM4513	WM8583
PA5151		WM5131	
PA5153		WM5133	
PA5411		WM5161	
PA5413		WM5163	
PA6211		WM5601	
PA6213		WM5603	
PA8031		WM6111	
PA8033		WM6113	
Column Mount *See Page 3 for Style/Size			
CM	Column Mount		

9 **FINISHES**

Standard Grade	Marine Grade		Standard Grade	Marine Grade	
40	NA	Raw Unfinished	53	100	Copper Clay
41	101	Black	56	109	Silver
42	102	Forest Green	61	106	Black Verde
43	114	Bright Red	70	118	Painted Chrome
44	107	White	71	105	Painted Copper
45	112	Bright Blue	72	108	Textured Black
46	123	Sunny Yellow	73	125	Matte Black
47	120	Aqua Green	76	121	Textured Architectural Bronze
49	NA	Galvanized	77	127	Textured White
50	111	Navy	78	124	Textured Silver
51	103	Architectural Bronze	10	130	Aspen Green
52	104	Patina Verde	11	131	Cantaloupe
12	133	Lilac	13	132	Putty

Consult factory for additional paint charges and availability

Project: _____
 Fixture Type: _____ Quantity: _____
 Customer: _____

LED PERFORMANCE

MODULE				
LED Wattage	CCT	Typical Luminous Flux	System Wattage	Typical Efficacy
16W	2700K	2000	19W	125
	3000K	2000	19W	125
	3500K	2000	19W	125
	4000K	2000	19W	125
24W	2700K	3000	28W	125
	3000K	3000	28W	125
	3500K	3000	28W	125
37W	2700K	4000	43W	108
	3000K	4000	43W	108
	3500K	4000	43W	108
	4000K	4000	43W	108

PLATFORM				
LED Wattage	CCT	Typical Luminous Flux	System Wattage	Typical Efficacy
29W	2700K	2670	30w	89
	3000K	2670	30w	89
	3500K	3209	30w	107
	4000K	3465	30w	116
46W	2700K	4004	46w	87
	3000K	4004	46w	87
	3500K	4814	46w	105
	4000K	5197	46w	115
78W	2700K	7041	80w	88
	3000K	7041	80w	88
	3500K	8464	80w	106
	4000K	9138	80w	114
117W	2700K	10561	120w	88
	3000K	10561	120w	88
	3500K	12696	120w	106
	4000K	13707	120w	114

MODULE SPECIFICATION

- Efficacy 65-125 lumens per watt
- Life: L70 50,000 hours
- Color temp: 2700K,3000K,3500K and 4000K
- CRI: >90

MODULE DRIVER SPECIFICATION

- Input Voltage: 120-277 Volts; 50/60Hz
- Dimmable down to 1%
- 0-10V, TRIAC and ELV dimming protocols are standard.
- Output Current: Constant Current: 440mA to 940mA (model dependent)
- Driver Efficiency > 80%; Power Factor > 0.9
- Integral Surge Protection in conformance to ANSI C62.41 Category A

MODULE LISTINGS

- Fully compliant with the RoHS Directive
- Certifications: CE/UL

PLATFORM SPECIFICATION:

- Efficacy ranges from 80-116 lumens per watt
- Customized lens precisely directs the light
- Operating temperature of -30C to 55C
- Life: L70 is 60,000 hours
- PLATFORM CCT: 2700K, 3000K,3500K, and 4000K
- TOWER CCT: 4000K
- CRI: >70
- Parallel circuitry ensures consistent light output in the event of single LED failure

PLATFORM DRIVER SPECIFICATION:

- Operates at 400mA
- Dimmable down to 10%
- Built in surge protection
- Constant current output 50/60HZ
- Driver Efficiency > 90% power factor above 99%
- 120 – 277 volts
- 0-10V dimming protocol is standard

PLATFORM LISTINGS

- Fully compliant with the RoHS Directive
- Certifications: ETL
- Rated IP65 with an optional IP66 rating

WARRANTY

See www.ANPlighting.com for complete fixture warranty.

- 5 year limited warranty on Modules/Drivers
- 7 year limited warranty* on Platform LED engines
- 5 year limited warranty* on Platform Drivers

*Limited Warranty: A typical year is defined as 4380 hours of operation. Failure defined as more than 10% of the total platform LED's not operating.

Project: _____

Fixture Type: _____ Quantity: _____

Customer: _____

POST MOUNTS - See Post Arm Section on Website for Specification Sheets and additional post arms.
Dimensions are Projection x Height

COLUMN MOUNT



CM / 5 3/4" SQ x 3 1/2" H



PA3111 / 25" x 15 1/4"



PA3113 / 25" x 15 1/4"



PA5151 / 14 1/4" x 19 3/4"



PA5153 / 14 1/4" x 19 3/4"



PA5411 / 17 7/8" x 25 1/8"



PA5413 / 17 7/8" x 25 1/8"



PA6211 / 22 3/4" x 26 1/2"



PA6213 / 22 3/4" x 26 1/2"



PA8031 / 20 1/2" x 20 1/4"



PA8033 / 20 1/2" x 20 1/4"

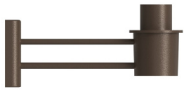


PA8521 / 18 1/4" x 14 1/2"



PA8523 / 18 1/4" x 14 1/2"

WALL MOUNTS - See Wall Mount Section on Website for Specification Sheets and additional wall mount arms.
Dimensions are Projection x Height.



WM4511 / 17" x 8"



WM4513 / 17" x 8"



WM5131 / 11" x 16 3/8"



WM5133 / 11" x 16 3/8"



WM5161 / 15 3/4" x 13 3/4"



WM5163 / 15 3/4" x 13 3/4"



WM5601 / 17 7/8" x 14"



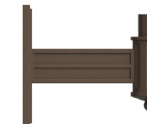
WM5603 / 17 7/8" x 14"



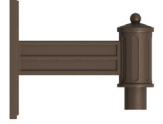
WM6111 / 20 3/8" x 24"



WM6113 / 20 3/8" x 24"



WM8581 / 17 1/8" x 17 1/2"

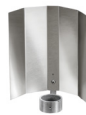


WM8583 / 17 1/8" x 17 1/2"

ACCESSORIES



CHC & CHF



HSS90 & HSS120



4ST36



PEND-CH3



EMG-LED5, 7, 10 & 20HV



HLMSPC-06 & HLMSPC-10



PC



TLPC



TL



TL5 & TL7