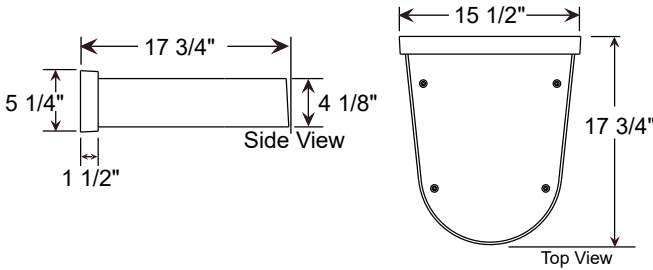
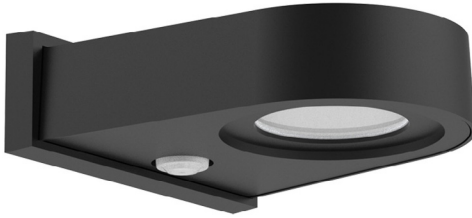


Project: \_\_\_\_\_

Fixture Type: \_\_\_\_\_ Quantity: \_\_\_\_\_

Customer: \_\_\_\_\_



Weight: 15.0 lbs

**Specifications**

**Material:**  
All parts are A356 cast aluminum. All mounting hardware shall be stainless steel or zinc plated steel.

**Mounting:**  
Mounts to non-combustible material over 4" standard Junction Box (others). Downlight only.

**Drivers:**  
Universal voltage 120-277 is standard. 0-10V, TRIAC and ELV dimming to 1% is standard.

See page 2 table for more LED engine and driver specifications.

**Electrical:**  
20KA max/10KA nominal surge protection device is standard.



**Certifications:**  
UL Listed for outdoor, wet location. UL1598 Standard for Safety for Lighting Luminaires.

**Finish:**  
A polyester powder coat high quality finish.

Marine grade finish is available.

**Modifications:**  
Consult factory for custom or modified designs.

**SLW19  
Siteline Wall Mount**

Catalog Number

1 2 3 4 5

SLW19



1 LIGHT SOURCE & WATTAGE	
Performance Platform	Edge Lit Comfort Optic
CPS30W18 (30W Ceramic LED)	E030LDS (30W Light Guide LED)
CPS39W18 (39W Platform LED/ CA Title 24)	E039LDS (39W Light Guide LED/ CA Title 24)
CPS46W18 (46W Ceramic LED)	E050LDS (50W Light Guide LED)
	E065LDS (65W Light Guide LED)
	E080LDS (80W Light Guide LED)

2 OPTICS	
T2 (Type II)*	
T3 (Type III)	
T4 (Type IV)	
T5 (Type V)	

\* Small Light guide panel Type 2 distribution is limited to 50W of Power (See LED Performance Chart)

3 COLOR TEMPERATURE (CCT)	
27K (2700K)	
30K (3000K)	
35K (3500K)	
40K (4000K)	

4 ACCESSORIES	
*EMG-LED20HV (20w, High Voltage LED Emergency Driver, remote placement, for use with Platforms, 78w or less)	
HLMSPC-FM (Integral high-low motion sensor plus photocell) See page 3 for specifications.	
PC (Button Photo Cell)	
* For Emergency lumen output data, see Resources section at <a href="http://www.ANPlighting.com">www.ANPlighting.com</a>	

5 FINISHES					
*Premium and Marine Grade Finish have additional charges					
Standard Colors		Marine Grade*	Standard Colors	Standard Grade	Marine Grade*
Aspen Green	10	10M	Architectural Bronze	51	51M
Cantaloupe	11	11M	Patina Verde	52	52M
Lilac	12	12M	Copper Clay	53	53M
Putty	13	13M	Silver	56	56M
Raw Unfinished	40	NA	Black Verde	61	61M
Black	41	41M	Painted Chrome	70	70M
Forest Green	42	42M	Painted Copper	71	71M
Bright Red	43	43M	Textured Black	72	72M
White	44	44M	Matte Black	73	73M
Bright Blue	45	45M	Textured Architectural Bronze	76	76M
Sunny Yellow	46	46M	Textured White	77	77M
Aqua Green	47	47M	Textured Silver	78	78M
Galvanized	49	NA	<b>PREMIUM FINISH</b>	Premium Grade*	Marine Grade*
Navy	50	50M	<b>Carbon Graphite</b>	96	96M

Consult Factory for additional paint charges and availability.

Project: \_\_\_\_\_  
 Fixture Type: \_\_\_\_\_ Quantity: \_\_\_\_\_  
 Customer: \_\_\_\_\_

**LED PERFORMANCE**

**CERAMIC PERFORMANCE PLATFORM**

System Wattage (Nominal)	CCT	CRI	Type II				Type III				Type IV				Type V							
			Delivered Lumens	Lumens Per Watt	B	U	G	Delivered Lumens	Lumens Per Watt	B	U	G	Delivered Lumens	Lumens Per Watt	B	U	G	Delivered Lumens	Lumens Per Watt	B	U	G
30W	2700K	70	4373	146	1	0	1	4265	142	1	0	1	4493	150	1	0	1	4463	149	3	0	1
	3000K	70	4551	152	1	0	1	4439	148	1	0	1	4676	156	1	0	1	4646	155	3	0	1
	3500K	70	4586	153	1	0	1	4473	149	1	0	1	4712	157	1	0	1	4681	156	3	0	1
	4000K	70	4668	156	1	0	1	4553	152	1	0	1	4796	160	1	0	1	4765	159	3	0	1
39W	2700K	70	5681	146	2	0	2	5539	142	2	0	2	5753	150	2	0	2	5733	149	3	0	2
	3000K	70	5913	152	2	0	2	5764	148	2	0	2	5988	156	2	0	2	5967	155	3	0	2
	3500K	70	5958	153	2	0	2	5808	149	2	0	2	6033	157	2	0	2	6012	156	3	0	2
	4000K	70	6065	156	2	0	2	5913	152	2	0	2	6142	160	2	0	2	6120	159	3	0	2
46W	2700K	70	6701	146	2	0	2	6533	142	2	0	2	6786	150	2	0	2	6762	149	3	0	2
	3000K	70	6974	152	2	0	2	6799	148	2	0	2	7063	156	2	0	2	7038	155	3	0	2
	3500K	70	7027	153	2	0	2	6851	149	2	0	2	7116	157	2	0	2	7091	156	3	0	2
	4000K	70	7153	156	2	0	2	6974	152	2	0	2	7244	160	2	0	2	7219	159	3	0	2
78W	2700K	70	10678	138	2	0	2	10563	138	2	0	2	11246	144	2	0	2	11138	145	4	0	2
	3000K	70	11114	144	2	0	2	10994	143	2	0	2	11705	150	2	0	2	11593	151	4	0	2
	3500K	70	11198	145	2	0	2	11077	144	2	0	2	11793	151	2	0	2	11680	152	4	0	2
	4000K	70	11399	148	2	0	2	11276	147	2	0	2	12005	154	2	0	2	11890	155	4	0	2
90W	2700K	70	12728	137	3	0	3	12590	135	3	0	3	13404	144	3	0	3	13276	143	3	0	3
	3000K	70	13247	142	3	0	3	13104	141	3	0	3	13951	150	3	0	3	13818	148	4	0	2
	3500K	70	13347	143	3	0	3	13203	142	3	0	3	14057	151	3	0	3	13922	150	4	0	2
	4000K	70	13587	146	3	0	3	13440	144	3	0	3	14309	154	3	0	3	14172	152	4	0	2
120W	2700K	70	16637	137	3	0	3	16211	134	3	0	3	17215	142	3	0	3	17977	148	4	0	2
	3000K	70	17316	143	3	0	3	16872	139	3	0	3	17917	148	3	0	3	18711	154	4	0	2
	3500K	70	17447	144	3	0	3	17000	140	3	0	3	18052	149	3	0	3	18852	155	4	0	2
	4000K	70	17760	146	3	0	3	17305	143	3	0	3	18377	151	3	0	3	19191	158	4	0	2

LED SPECIFICATIONS - CERAMIC PLATFORM	
• Performance, Ceramic-cooling technology	• Ingress Protection: IP66
• Up to 18,960 lumens	• Certification: ETL
• Efficacy ranges from 131-160 lm/W	• CRI: >70
• Distributions: Types II, III, IV, V	
• CCT: 2700K, 3000K, 3500K, 4000K	
• Life: L70 > 50,000 hours	

DRIVER SPECIFICATION	
• Universal Input 120-277V	• Constant current output 50/60Hz
• 0-10V Dimming to 10%	• Operating Temperature: -40°C Minimum
• Power Factor @ Full Load >95%	• Ingress Protection: IP66
• THD @ Full Load <10%	• Certifications: UL Recognized, CSA, RoHS

Project: \_\_\_\_\_

Fixture Type: \_\_\_\_\_ Quantity: \_\_\_\_\_

Customer: \_\_\_\_\_

**LED PERFORMANCE Continued**

**EDGE LIT COMFORT OPTIC**

System Wattage (Nominal)	CCT	CRI	Type II					Type III					Type IV					Type V				
			Delivered Lumens	Lumens Per Watt	B	U	G	Delivered Lumens	Lumens Per Watt	B	U	G	Delivered Lumens	Lumens Per Watt	B	U	G	Delivered Lumens	Lumens Per Watt	B	U	G
30W	2700K	70	3307	110	1	0	1	3405	114	1	0	1	3474	116	1	0	1	3124	104	2	0	1
	3000K	70	3211	107	1	0	1	3307	110	1	0	1	3373	112	1	0	1	3034	101	2	0	1
	3500K	70	3595	120	1	0	1	3702	123	1	0	1	3776	126	1	0	1	3396	113	2	0	1
	4000K	70	3479	116	1	0	1	3583	119	1	0	1	3655	122	1	0	1	3287	110	2	0	1
39W	2700K	70	4299	110	2	0	2	4427	114	2	0	2	4515	116	2	0	2	4061	104	2	0	1
	3000K	70	4175	107	2	0	2	4299	110	2	0	2	4385	112	2	0	2	3944	101	2	0	1
	3500K	70	4673	120	2	0	2	4813	123	2	0	2	4909	126	2	0	2	4415	113	2	0	1
	4000K	70	4523	116	2	0	2	4659	119	2	0	2	4751	122	2	0	2	4273	110	2	0	1
50W	2700K	70	5492	110	2	0	2	5676	114	2	0	2	5789	116	2	0	2	5207	104	3	0	1
	3000K	70	5333	107	2	0	2	5511	110	2	0	2	5622	112	2	0	2	5056	101	3	0	1
	3500K	70	5970	120	2	0	2	6170	123	2	0	2	6293	126	2	0	2	5660	113	3	0	1
	4000K	70	5778	116	2	0	2	5972	119	2	0	2	6092	122	2	0	2	5479	110	3	0	1
65W	2700K	70	-	-	-	-	-	7378	114	3	0	3	7526	116	2	0	2	6769	104	3	0	1
	3000K	70	-	-	-	-	-	7165	110	3	0	3	7308	112	2	0	2	6573	101	3	0	1
	3500K	70	-	-	-	-	-	8021	123	3	0	3	8181	126	2	0	2	7358	113	3	0	1
	4000K	70	-	-	-	-	-	7764	119	3	0	3	7919	122	2	0	2	7122	110	3	0	1
80W	2700K	70	-	-	-	-	-	9007	114	3	0	3	9186	116	3	0	3	8321	104	3	0	2
	3000K	70	-	-	-	-	-	8747	110	3	0	3	8921	112	3	0	3	8081	101	3	0	2
	3500K	70	-	-	-	-	-	9792	123	3	0	3	9986	126	3	0	3	9046	113	3	0	2
	4000K	70	-	-	-	-	-	9478	119	3	0	3	9666	122	3	0	3	8758	110	3	0	2

**LED SPECIFICATIONS - LIGHT GUIDE SMALL (EDGE LIT)**

• Edge-lit comfort solution	• Ingress Protection: IP66
• Up to 9,986 lumens	• Certifications: UL, RoHS
• Efficacy ranges from 101-126 lm/W	• CRI: >70
• Distributions: Types II, III, IV, V	
• CCT: 2700K, 3000K, 3500K, 4000K	
• Life: L70 = 80,000 hours	

**DRIVER SPECIFICATION**

• Universal Input 120-277V
• 0-10V Dimming to 10%
• Power Factor @ Full Load >95%
• THD @ Full Load <10%
• Constant current output 50/60Hz
• Operating Temperature: -40°C Minimum
• Ingress Protection: IP66
• Certifications: UL Recognized, CSA, RoHS

**HIGH-LOW MOTION SENSOR - FLUSH MOUNT (HLMSPC-FM)**

• Sensor Type: Quad Element Passive Infrared (PIR)
• Factory Defaults:
• Photocell: ON
• Dim Levels: High / 50%
• Motion Time Delay: 5 min
• Max Sensor Range: 40 ft
• Ingress Protection: IP65

**SURGE SUPPRESSION**

• A Surge Protection Device (SPD) is standard featuring a 20kA maximum discharge current 8/20µs Waveform (Imax); 10kA nominal discharge current 8/20µs Waveform (In) and thermally protected varistor technology.
• Meets IEEE C62.41.2 Location Category C High and US Dept of Energy MSSLC Model Spec.
• SPD shall be wired in series and will result in an open circuit during a fault state, resulting in the luminaire to turn off to protect system components thereby indicating SPD module replacement.

Project: \_\_\_\_\_

Fixture Type: \_\_\_\_\_ Quantity: \_\_\_\_\_

Customer: \_\_\_\_\_

**FINISHES**

- A polyester powder coat high quality finish is electro-statically applied and baked at 430° for exceptional durability and color retention. Products undergo an intensive five-step cleansing and pretreatment process for maximum paint adhesion.
- Marine grade finish provides superior salt, humidity and UV protection. This coating withstands up to 3000 hours of continuous salt spray, comes with a 5-year warranty and is available in either a textured or gloss surface.

**WARRANTY**

See [www.ANPlighting.com](http://www.ANPlighting.com) for complete fixture warranty.

LED warranty information

- 5 year limited warranty\* on Light Guide engines
- 5 year limited warranty\* on LED Drivers

\*Limited Warranty: A typical year is defined as 4380 hours of operation. Failed defined as more than 10% of the total platform LED's not operating.

**ACCESSORIES**



EMG-LED20



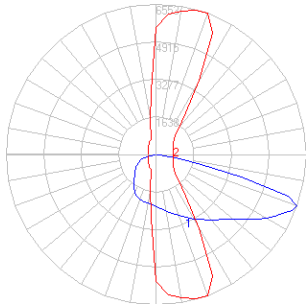
HLMSPC-FM



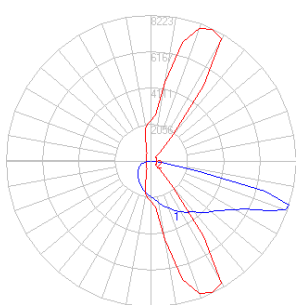
PC

**PHOTOMETRIC DISTRIBUTION - CERAMIC PERFORMANCE PLATFORM**

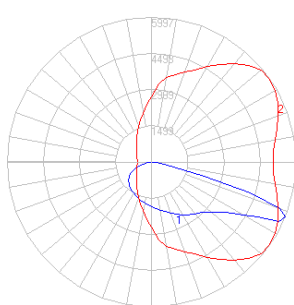
Sansi Ceramic Platform T2



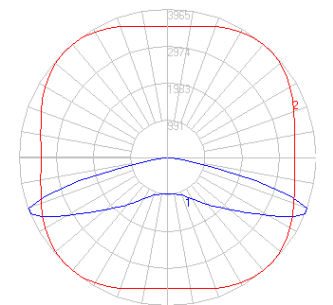
Sansi Ceramic Platform T3



Sansi Ceramic Platform T4

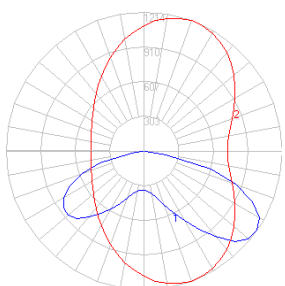


Sansi Ceramic Platform T5

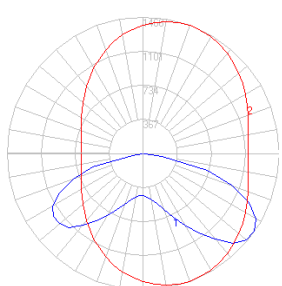


**PHOTOMETRIC DISTRIBUTION - EDGE LIT COMFORT OPTIC**

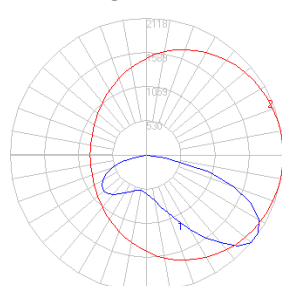
LGP - T2



LGP - T3



LGP - T4



LGP - T5

